



Certificate of Analysis

QA SAMPLE - INFORMATIONAL ONLY

1 of 3

ICAL ID: 20230131-041
Sample: CA230131-020-104
Full Spectrum Dropper, 1500mg CBD+ 1500mg
CBG, Citrus, 60ml
Strain: Full Spectrum Dropper, 1500mg CBD+
1500mg CBG, Citrus, 60ml
Category: Ingestible
Type: Tincture

Veddara
Lic. #
2330 Ponce de Leon Blvd,
Coral Gables, Florida 33134
Lic. #

Batch#: DK21-BO900
Batch Size Collected:
Total Batch Size:
Collected: 02/01/2023; Received: 02/01/2023
Completed: 02/01/2023

Moisture	Δ9-THC	CBD	Total Cannabinoids	Total Terpenes
NT				NT
Water Activity	45.46 mg/unit	1,620.18 mg/unit	3,394.29 mg/unit	
NT				

Summary

Batch
Cannabinoids

SOP Used

POT-PREP-004

Date Tested

02/01/2023

Complete
Complete



Cannabinoid Profile

1 Unit = bottle, 57.85 g. 1 mL = 0.92 g.

Analyte	LOQ (mg/g)	LOD (mg/g)	%	mg/g	mg/mL	mg/unit	Analyte	LOQ (mg/g)	LOD (mg/g)	%	mg/g	mg/mL	mg/unit
THCa	0.0368	0.0123	ND	ND	ND	ND	CBGa	0.0534	0.0178	ND	ND	ND	ND
Δ9-THC	0.0368	0.0053	0.079	0.79	0.72	45.46	CBG	0.0368	0.0061	2.847	28.47	26.19	1646.93
Δ8-THC	0.0368	0.0055	ND	ND	ND	ND	CBN	0.0368	0.0074	0.011	0.11	0.10	6.31
THCV	0.0368	0.0048	ND	ND	ND	ND	Total THC			0.08	0.79	0.72	45.46
CBDa	0.0368	0.0059	ND	ND	ND	ND	Total CBD			2.80	28.01	25.77	1620.18
CBD	0.0368	0.0050	2.801	28.01	25.77	1620.18	Total			5.87	58.67	53.98	3394.29
CBDV	0.0368	0.0049	0.030	0.30	0.28	17.53							
CBC	0.0444	0.0148	0.100	1.00	0.92	57.88							

Total THC=THCa * 0.877 + Δ9-THC; Total CBD = CBDa * 0.877 + CBD. LOD= Limit of Detection, LOQ= Limit of Quantitation, ND= Not Detected, NR= Not Reported. Potency is reported on a dry weight basis. Instrumentation and analysis SOPs used: Cannabinoids:UHPLC-DAD(POT-INST-005),Moisture:Moisture Analyzer(MOISTURE-001),Water Activity:Water Activity Meter(WA-INST-002), Foreign Material:Microscope(FOREIGN-001). Density measured at 19-24 °C, Water Activity measured at 0-90% RH. All QA submitted by the client, All CA State Compliance sampled using SAMPL-SOP-001.

Terpene Profile

Analyte	LOQ (mg/g)	LOD (mg/g)	%	mg/g	Analyte	LOQ (mg/g)	LOD (mg/g)	%	mg/g
---------	------------	------------	---	------	---------	------------	------------	---	------

NR= Not Reported (no analysis was performed), ND= Not Detected (the concentration is less than the Limit of Detection (LOD)). Analytical instrumentation used: HS-GC-MS; samples analyzed according to SOP TERP-INST-003.



Innate Chemical Analysis Labs
8312 Miramar Mall
San Diego, CA
(858) 623-2740
www.innateCAL .com
Lic# C8-0000047-LIC

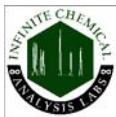
Josh M Swider

Josh Swider
Lab Director, Managing Partner
02/01/2023

Condent Cannabis
All Rights Reserved
support@condentcannabis.com
(866) 506-5866
www.condentcannabis.com



This product has been tested by Innate Chemical Analysis, LL C using valid testing methodologies and a quality system as required by state law. All LQC samples were performed and met the prescribed acceptance criteria in 16 CCR section 15730, pursuant to 16 CCR section 15726(e)(13). Values reported relate only to the product tested. Innate Chemical Analysis, LL C makes no claims as to the efficacy, safety or other risks associated with any detected or non-detected levels of any compounds reported herein. This Certificate shall not be reproduced except in full, without the written approval of Innate Chemical Analysis, LL C.



Certificate of Analysis

QA SAMPLE - INFORMATIONAL ONLY

2 of 3

ICAL ID: 20230131-041
Sample: CA230131-020-104
Full Spectrum Dropper, 1500mg CBD+ 1500mg
CBG, Citrus, 60ml
Strain: Full Spectrum Dropper, 1500mg CBD+
1500mg CBG, Citrus, 60ml
Category: Ingestible
Type: Tincture

Veddara
Lic. #
2330 Ponce de Leon Blvd,
Coral Gables, Florida 33134
Lic. #

Batch#: DK21-BO900
Batch Size Collected:
Total Batch Size:
Collected: 02/01/2023; Received: 02/01/2023
Completed: 02/01/2023

Residual Solvent Analysis

Category 1	LOQ	LOD	Limit	Status	Category 2	LOQ	LOD	Limit	Status	Category 2	LOQ	LOD	Limit	Status
------------	-----	-----	-------	--------	------------	-----	-----	-------	--------	------------	-----	-----	-------	--------

NR= Not Reported (no analysis was performed), ND= Not Detected (the concentration is less than the Limit of Detection (LOD)). Analytical instrumentation used: HS-GC-MS; samples analyzed according to SOP RS-INST-003.

Heavy Metal Screening

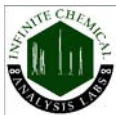
LOQ	LOD	Limit	Status
-----	-----	-------	--------

NR= Not Reported (no analysis was performed), ND= Not Detected (the concentration is less than the Limit of Detection (LOD)). Analytical instrumentation used: ICP-MS; samples analyzed according to SOP HM-INST-003.

Microbiological Screening

Limit	Result	Status
-------	--------	--------

ND=Not Detected. Analytical instrumentation used:qPCR; samples analyzed according to SOP MICRO-INST-001.



Innite Chemical Analysis Labs
8312 Miramar Mall
San Diego, CA
(858) 623-2740
www.inniteCAL .com
Lic# C8-0000047-LIC

Josh M Swider

Josh Swider
Lab Director, Managing Partner
02/01/2023

Condent Cannabis
All Rights Reserved
support@condentcannabis.com
(866) 506-5866
www.condentcannabis.com



This product has been tested by Innite Chemical Analysis, LL C using valid testing methodologies and a quality system as required by state law. All LQC samples were performed and met the prescribed acceptance criteria in 16 CCR section 15730, pursuant to 16 CCR section 15726(e)(13). Values reported relate only to the product tested. Innite Chemical Analysis, LL C makes no claims as to the efficacy, safety or other risks associated with any detected or non-detected levels of any compounds reported herein. This Certificate shall not be reproduced except in full, without the written approval of Innite Chemical Analysis, LL C.



Certificate of Analysis

QA SAMPLE - INFORMATIONAL ONLY

3 of 3

ICAL ID: 20230131-041
Sample: CA230131-020-104
Full Spectrum Dropper, 1500mg CBD+ 1500mg
CBG, Citrus, 60ml
Strain: Full Spectrum Dropper, 1500mg CBD+
1500mg CBG, Citrus, 60ml
Category: Ingestible
Type: Tincture

Veddara
Lic. #
2330 Ponce de Leon Blvd,
Coral Gables, Florida 33134
Lic. #

Batch#: DK21-BO900
Batch Size Collected:
Total Batch Size:
Collected: 02/01/2023; Received: 02/01/2023
Completed: 02/01/2023

Chemical Residue Screening

Category 1	LOQ	LOD	Status	Mycotoxins	LOQ	LOD	Limit	Status
------------	-----	-----	--------	------------	-----	-----	-------	--------

Category 2	LOQ	LOD	Limit	Status	Category 2	LOQ	LOD	Limit	Status
------------	-----	-----	-------	--------	------------	-----	-----	-------	--------

Other Analyte(s):

NR= Not Reported (no analysis was performed), ND= Not Detected (the concentration is less than the Limit of Detection (LOD)). Analytical instrumentation used: LC-MS-MS & GC-MS-MS; samples analyzed according to SOPs PESTMYCO-LC-INST-004 and PEST-GC-INST-003.



Innite Chemical Analysis Labs
8312 Miramar Mall
San Diego, CA
(858) 623-2740
www.inniteCAL .com
Lic# C8-0000047-LIC

Josh M Swider

Josh Swider
Lab Director, Managing Partner
02/01/2023

Condent Cannabis
All Rights Reserved
support@condentcannabis.com
(866) 506-5866
www.condentcannabis.com



This product has been tested by Innite Chemical Analysis, LL C using valid testing methodologies and a quality system as required by state law. All LQC samples were performed and met the prescribed acceptance criteria in 16 CCR section 15730, pursuant to 16 CCR section 15726(e)(13). Values reported relate only to the product tested. Innite Chemical Analysis, LL C makes no claims as to the efficacy, safety or other risks associated with any detected or non-detected levels of any compounds reported herein. This Certificate shall not be reproduced except in full, without the written approval of Innite Chemical Analysis, LL C.